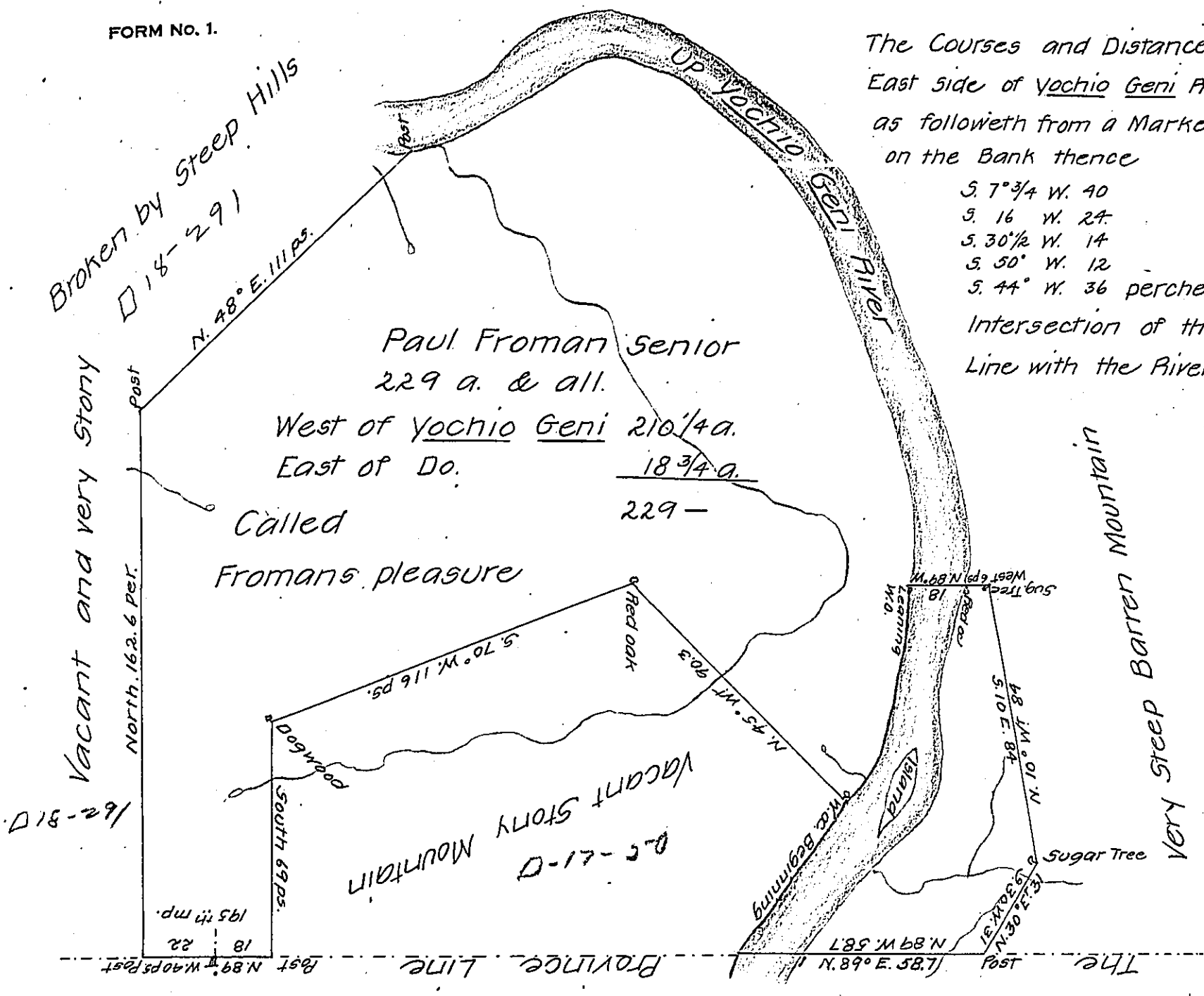


FORM No. 1.



The Courses and Distances up the East side of Yochio Geni River are as followeth from a Marked Red oak on the Bank thence

- S. 7 3/4 W. 40
- S. 16 W. 24
- S. 30 1/2 W. 14
- S. 50 W. 12
- S. 44 W. 36 perches to the Intersection of the Province Line with the River Bank.

Situated on Great Yochio Geni River adjoining the Province Line in the New purchase Bedford County and Survey'd the 14th day of September 1771 By Order No 3076 dated April 17th 1769.

By A. Lane Dept.
To John Lukens Esqr. Sur. Genl.

The Courses and Distances up the West Side of Yochio Geni River are as followeth - Beginning at a Post on the Bank, thence

- N. 74° E. 24
- N. 49 3/4 E. 34
- S. 80° E. 12
- S. 62° E. 40
- S. 35° E. 42.3
- S. 25° E. 28
- S. 19 1/2 E. 56.4
- S. 2 1/2 E. 24.7 to a leaning W.O.
- Total 261.4

thence the Red oak Corner on the East Side bears S. 89° E. 18 ps. Dist

- S. 10° W. 43.8
- S. 39 1/4 W. 15.7
- S. 31° W. 8 ps. W.O. marked on the Platt Beginning

IN TESTIMONY that the above is a copy of the original remaining on file in the Department of Internal Affairs of Pennsylvania, made conformably to an Act of Assembly approved the 16th day of February 1833, I have hereunto set my hand and caused the Seal of said Department to be affixed at Harrisburg, this seventeenth day of April 1907

Isaac B. Brown
Secretary of Internal Affairs.